

COME FOR A TOUR ● LEAVE WITH AN

# Experience

2023 STUDENT | YOUTH GROUP

# The Amish Experience

Lancaster County,  
Pennsylvania

Leacock Leola Bareville Blue Ball  
Smoketown New Holland White Horse  
Bird-in-Hand Intercourse  
Lancaster Ronks Gordonville  
Fertility **AMISH** **COUNTRY**  
Lampeter Paradise Gap  
Vintage



Jacob's  
Choice  
at AE Theater



Amish Country  
Homestead &  
One-Room School



Amish Farmlands  
Tour with  
Step-on Guide



Amish  
Visit-in-Person  
Tour



Amish Artisans  
Shopping  
Adventure



Total  
Amish  
Experience



Dine in  
an Amish  
Home



Sight &  
Sound  
Theatres

# ATTRACTIONS & TOUR PACKAGES



## **Jacob's Choice at the Amish Experience Theater**

Adult \$8.95 (Allow 40 minutes)

"400 years of history in 40 minutes of magic." Our one-of-a-kind, five-screen movie experience is one of only a handful of experiential theaters in North America. Combining film, a three-dimensional barnyard set and striking special effects, the Amish Experience Theater's critically acclaimed production of *Jacob's Choice* tells the unforgettable story of the Amish, a journey from Europe to America, emotionally unfolding in the modern day daily life of the Fisher family.

## **Amish Country Homestead & One-Room School**

Adult \$10.95 (Allow 45 minutes)

Lancaster's only officially designated *Heritage Site* Amish House. The scenic country setting, completely surrounded by Amish farms, is but one reason why the Homestead is the only *Heritage Site* Amish house tour. This prestigious distinction has been earned for its...

**Authenticity** – the "lived-in" look of the house as you walk through nine rooms, including a one-room school.

**Interpretation** – Your guide answers the how and why questions that baffle visitors (and locals). Why do the Amish dress so plainly? How do they power their appliances? Why don't they have churches? Oh, and yes, you'll just love all the marble rollers.



## **Amish Farmlands Tour with Step-on Guide (Allow 3 hours)**

The Original Farmland Tour. Visitors know the beauty of our Amish countryside the world over...sights you find nowhere else. The spectacular farmland scenery changes with the seasons. It seems not much has changed along our backroads. Horses plow the fields, Amish buggies clip-clop down country roads, but things are indeed changing...there's an Amish girl texting on her iPhone! Our step-on guides are certified local experts, and our Farmlands Tour includes admission to either the Amish Experience Theater or the Amish Country Homestead – your choice! See pricing below.

Special Combo  
PRICING

### **Amish at Home (Amish Experience Theater & Homestead)**

Adult \$14.25 (Allow 90 minutes)

### **Amish Backroads (Amish Experience Theater & Farmlands Tour)**

Adult \$13.95 (Allow 3.5 hours)

### **Amish Farmlands (Amish Country Homestead, & Farmlands Tour)**

Adult \$16.50 (Allow 3.5 hours)

### **Amish Trails (Amish Experience Theater, Homestead, & Farmlands Tour)**

Adult \$19.50 (Allow 3.5 hours)

## **Traditional Pennsylvania Dutch Family-Style Meals**

### **Plain & Fancy Restaurant**

Grades K-5 \$29.50, Grades 6-8 \$30.50, Grade 9-Up \$31.50 (including adult chaperones)

Delicious, hearty, satisfying and memorable - Amish Country abounds with excellent PA Dutch restaurants. We've selected the best of the best as part of our group tour portfolio. Trust us to meet your budget, timing, and dietary requests. Meal options are inclusive of tax and gratuity. Our on-site restaurant partner, Plain & Fancy, is the original PA Dutch Family-Style Restaurant in Lancaster County, celebrating over 60 years of farm-to-table goodness.



### **The Total Amish Experience with Plain & Fancy Restaurant**

Grades K-5 \$49.00, Grades 6-8 \$50.00, Grade 9 and Up \$51.00

(including adult chaperones) (Allow 5.5 hours)

Be immersed into the Amish community on a Farmlands Tour, learn how the Amish live without modern conveniences with a guided tour through the Amish Country Homestead and Schoolroom, and be spellbound by *Jacob's Choice*, the story of a young Amish boy making a decision to leave or stay Amish shown in the Amish Experience Theater. PA Dutch meal to complete the tour included at Plain and Fancy.



# INTERACTIVE THEME TOURS



## Amish VIP (Visit-In-Person) Tour

With Meal \$64.25 Per Person

Without Meal \$39.25 Per Person

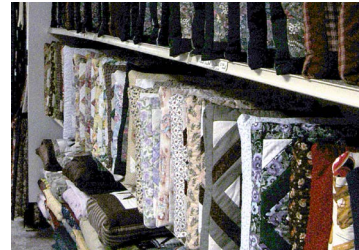
*(Allow 4.5 Hours With Meal, Allow 3 Hours Without Meal)*

A rare and special experience as you tour an operating Amish dairy farm, visit a home to learn about growing up Amish, and go behind the scenes at an Amish Craftsman's "Cottage Industry." Lancaster County's only official "Heritage Tour."

## Amish Artisans — A Shopping Adventure

\$22.95 Per Person *(Allow 3.5 hours)*

Who doesn't like to shop? Begin the tour with a gift bag and a mini jar of jelly and we'll add a "free gift" at each of our four Amish stops. Receive a wooden toy at an Amish toymaker. Get a whoopie pie at the bake shop. Take home an Amish handmade leather craft and finish with a quilted notion from a quilt shop. Four stops, five gifts, great shopping!



## Dine in an Amish Home

\$49.50 - \$52.50 | Call or email for availability.

*(Allow 1.5 hours.)*

Enjoy an authentic fully licensed Amish meal and a Q&A with your Amish hosts learning about the Amish culture straight from the source.



**About Student /Youth Rates** All rates apply to groups of 25 or more, when more than half of the group are students (thru high school). Tour pricing based on using your bus and driver. One driver and leader per bus are complimentary. At restaurants, at least one adult should be seated at each table with students. Call us for details, scheduling advice, and help in customizing your visit.

### Lancaster's #1 Amish Learning Experience!

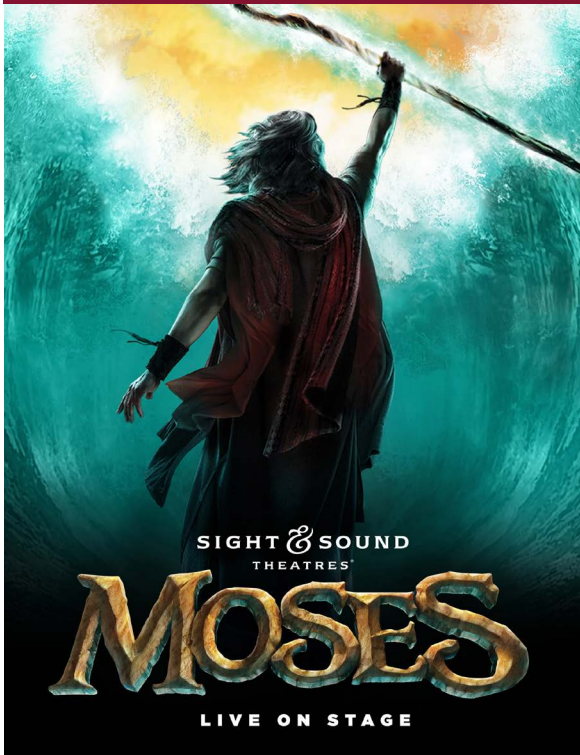
- Only designated "Heritage Site" Amish House in Lancaster County.
- Only designated "Heritage Tour" in Lancaster County – The Visit-In-Person Tour.

**Years of Experience with Schools & Youth Groups...** This is not a re-creation of a people or a place lost to history. This is a living culture, alive and vibrant, balancing heritage and tradition with progress and technology. Students are encouraged to understand and respect different traditions and lifestyles through a unique cross-cultural experience. And we'll try to make putting the trip together easy on you!

**Exclusive Study Guide** Prepared by teachers and local experts, the extensive study guide, available free of charge upon booking, has activities for before, during, and after your visit...for those who want to maximize the educational value of their trip.



The Amish Experience is pleased to announce our partnership with:



Call today to add Sight & Sound Theatres to your itinerary.  
For more info email [clinton@amishexperience.com](mailto:clinton@amishexperience.com) or call 717.768.8400 Ext. 217.



Notes: \_\_\_\_\_  
\_\_\_\_\_  
\_\_\_\_\_  
\_\_\_\_\_  
\_\_\_\_\_  
\_\_\_\_\_  
\_\_\_\_\_  
\_\_\_\_\_



**Clinton Martin, CTIS**  
*President*  
717.768.8400 Ext. 217  
[clinton@amishexperience.com](mailto:clinton@amishexperience.com)



3121 Old Philadelphia Pike • Bird-in-Hand, PA 17505  
PO Box 414 • Bird-In-Hand, PA 17505  
**717.768.8400 Ext. 217 | [AmishExperience.com](http://AmishExperience.com)**