

# COME FOR A TOUR ● LEAVE WITH AN Experience 2026 GROUP LEADER

## The Amish Experience

Lancaster County,  
Pennsylvania

Leacock  
Smoketown  
Bird-in-Hand  
Lancaster  
Fertility  
Ronks  
Lampeter  
Strasburg  
Gordonville  
Leola  
Bareville  
New Holland  
Intercourse  
**AMISH COUNTRY**  
Paradise  
Vintage  
Blue Ball  
White Horse  
Gap



Jacob's  
Choice at  
AE Theater



Amish Country  
Homestead &  
One-Room School



Amish Farmlands  
Tour with  
Step-on Guide



Amish  
Visit-in-Person  
Tour



Amish Artisans  
Shopping  
Adventure



Total  
Amish  
Experience



Dine in  
an Amish  
Home



Sight &  
Sound  
Theatres



# ATTRACTIONS & TOUR PACKAGES



## **Jacob's Choice at the Amish Experience Theater**

Adult \$10.50 Child (4-12) \$7.95 (Allow 40 minutes)

"400 years of history in 40 minutes of magic." Our one-of-a-kind, five-screen movie experience is one of only a handful of experiential theaters in North America. Combining film, a three-dimensional barnyard set and striking special effects, the Amish Experience Theater's critically acclaimed production of *Jacob's Choice* tells the unforgettable story of the Amish, a journey from Europe to America, emotionally unfolding in the modern day daily life of the Fisher family.

## **Amish Country Homestead & One-Room School**

Adult \$14.95 Child (4-12) \$10.95 (Allow 45 minutes)

Lancaster's only officially designated *Heritage Site* Amish House. The scenic country setting, completely surrounded by Amish farms, is but one reason why the Homestead is the only *Heritage Site* Amish house tour. This prestigious distinction has been earned for its...

**Authenticity** – the "lived-in" look of the house as you walk through nine rooms, including a one-room school.

**Interpretation** – Your guide answers the how and why questions that baffle visitors (and locals). Why do the Amish dress so plainly? How do they power their appliances? Why don't they have churches? Oh, and yes, you'll just love all the marble rollers.



## **Amish Farmlands Tour with Step-on Guide (Allow 3 hours)**

The Original Farmland Tour. Visitors know the beauty of our Amish countryside the world over...sights you find nowhere else. The spectacular farmland scenery changes with the seasons. It seems not much has changed along our backroads. Horses plow the fields, Amish buggies clip-clop down country roads, but things are indeed changing...there's an Amish girl texting on her iPhone! Our step-on guides are certified local experts, and our Farmlands Tour includes admission to either the Amish Experience Theater or the Amish Country Homestead – your choice! See pricing below.

### Special Combo PRICING

#### **Amish at Home (Amish Experience Theater & Homestead)**

Adult \$19.00 Child (4-12) \$14.25 Allow 90 minutes

#### **Amish Backroads (Amish Experience Theater & Farmlands Tour)**

Adult \$16.25 Child (4-12) \$13.95 Allow 3 hours

#### **Amish Farmlands (Amish Country Homestead, & Farmlands Tour)**

Adult \$20.25 Child (4-12) \$16.50 Allow 3 hours

#### **Amish Trails (Amish Experience Theater, Homestead, & Farmlands Tour)**

Adult \$27.95 Child (4-12) \$19.50 Allow 3.5 hours

## **Traditional Pennsylvania Dutch Family-Style Meals**

### **Plain & Fancy Restaurant**

Adult \$37.00 Child (4-12) \$24.00

Delicious, hearty, satisfying and memorable - Amish Country abounds with excellent PA Dutch restaurants. We've selected the best of the best as part of our group tour portfolio. Trust us to meet your budget, timing, and dietary requests. Meal options are inclusive of tax and gratuity. Our on-site restaurant partner, Plain & Fancy, is the original PA Dutch Family-Style Restaurant in Lancaster County, celebrating over 60 years of farm-to-table goodness. Open 7 days a week.



## **The Total Amish Experience with Plain & Fancy Restaurant**

Adult \$64.95 Child (4-12) \$43.50

Be immersed into the Amish community on a Farmlands Tour, learn how the Amish live without modern conveniences with a guided tour through the Amish Country Homestead and Schoolroom, and be spellbound by *Jacob's Choice*, the story of a young Amish boy making a decision to leave or stay Amish shown in the Amish Experience Theater. PA Dutch meal to complete the tour included at Plain and Fancy.



# INTERACTIVE THEME TOURS



## Amish VIP (Visit-In-Person) Tour

With Meal	Adult \$71.25	Child \$66.95
Without Meal	Adult \$46.25	Child \$41.95

*(Allow 4.5 Hours With Meal, Allow 3 Hours Without Meal)*

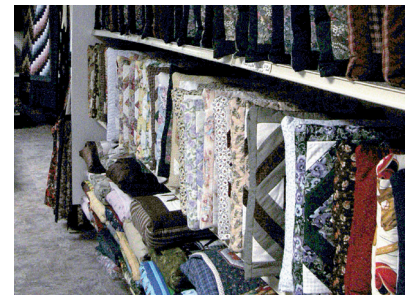
A rare and special experience as you tour an operating Amish dairy farm, visit a home to learn about growing up Amish, and go behind the scenes at an Amish Craftsman's "Cottage Industry." Lancaster County's only official "Heritage Tour."

## Amish Artisans — A Shopping Adventure

Adult \$24.75 Child \$23.25

*(Allow 3.5 hours)*

Who doesn't like to shop? Begin the tour with a gift bag and a mini jar of jelly and we'll add a "free gift" at each of our four Amish stops. Receive a wooden toy at an Amish toymaker. Get a whoopie pie at the bake shop. Take home an Amish handmade leather craft and finish with a quilted notion from a quilt shop. Four stops, five gifts, great shopping!



## Dine in an Amish Home

\$57.00 | Call or email for availability.

*(Allow 2 hours.)*

Enjoy an authentic fully licensed Amish meal and a Q&A with your Amish hosts learning about the Amish culture straight from the source. Includes a step-on guide to get you there and back.







## Sight & Sound Theatres

Booking your meal/theatre packages for Sight & Sound® with Amish Experience will save you time, allow for the best seating available at the time of reservation, no deposit is required and payment six weeks out from your performance.

The Amish Experience is pleased to announce our partnership with:



Call today to add Sight & Sound Theatres to your itinerary.

For more info email [clinton@amishexperience.com](mailto:clinton@amishexperience.com) or call 717.768.8400 Ext. 217.



## Why Book Sight & Sound With Us?

- No deposit required. No money in play till you know whether the trip is going. If you have to cancel, even up to six weeks prior to arrival, you don't lose anything.
- Immediate seat assignment upon booking. You get a seating chart with your seats marked.
- Book your show, meal, guided tour, attraction, package all with one call, one contract, one payment to make.
- Access the regular group rates you'd get by making all the calls yourself.
- One call. Convenient. Friendly Service. 717-768-8400, ext. 217.



**Clinton Martin, CTIS**  
*President*

717.768.8400 Ext. 217  
[clinton@amishexperience.com](mailto:clinton@amishexperience.com)



3121 Old Philadelphia Pike • Bird-in-Hand, PA 17505  
PO Box 414 • Bird-In-Hand, PA 17505

**717.768.8400 Ext. 217 | [AmishExperience.com](http://AmishExperience.com)**